

# EGM<sup>LLC</sup>

## PROCESS & CHEMICAL FEED EQUIPMENT

Oil & Gas • Power Generation • Chemical Processing • Mining • Pulp and Paper • Water Resources • Pharmaceutical

## A&F SYSTEMS



3748 Industrial Park Drive  
Mobile, AL 36693 USA  
+1.251.662.1250 phone  
+1.251.662.8250 fax  
[www.egm-llc.com](http://www.egm-llc.com)

**P**iston pumps from A&F Machine are heavy duty metering devices built with ground and polished pistons and are machined to offer precise alignment that promotes long pump life.

Both the inlet and outlet of the pump head is configured with double ball check valves to insure accurate metering. Systems from EGM incorporate pressure relief valves and stainless steel plumbing for safety.

Because of the flexibility and durability of these pumps, EGM offers many configurations and system options to provide users with complete metering systems built around the rugged A&F design. Available in single, double, or quad pump head configurations, EGM designs pumping systems that can be customized to meet the specific process requirements.

A further benefit of using these pumps is that the pump heads are interchangeable allowing for upgrading capacity easily after the pump is put into service.



**S**ystems from EGM that incorporate piston pumps can be accessorized with flowmeters, pulsation dampeners, customized structures, enclosures, downstream dilution loops, and host of automation options to complete a customized system.

From the simplest of configurations, like the twin headed pump with AC Tech drive picture to the left, to complete skid mounted systems for a wide range of applications, as shown above, EGM has the ability to configure customized A&F Piston Pump systems to meet a host of needs.

Systems can be built with EGM standard components, or modified to utilize client specified parts to comply with site, mill or plant requirements.

**STANDARD COMPONENTS**

<u>Manufacturer</u>	<u>Description</u>
Baldor	Wash Down Duty Motor
A & F	Positive Displacement Piston Pump
A & F	Safety Relief Valves
Instaflo	Calibration Columns
ACTech	M Series Drive

The quad A&F portable unit is designed for quick and easy chemical evaluations. The system incorporates a modular design with four pumping zones; four individual calibration columns, dual header for dual chemical use and dolly like wheels for convenient portability. This system also offers flexibility in serving as a “portable” back-up system in the event permanent installations have down-time.

## SPECIFICATIONS—QUAD MOBILE SYSTEM

**Power Supply:** 120 VAC, 1 Phase, 20 AMP

**Materials of Construction:** 316 SS, Cast Iron, Teflon

**Wash Down Duty Motor:** 1 HP, 208-230/460 V

**Plumbing Connections:** Chemical In: 1" NPT

**Unit Capacities:**

- EPAF-4-1/4: 0 – 060 cc/MIN •
- EPAF-4-3/8: 0 – 100 cc/MIN •
- EPAF-4-1/2: 0 – 188 cc/MIN •
- EPAF-4-5/8: 0 – 360 cc/MIN •
- EPAF-4-1: 0 – 900 cc/MIN •

**System Pressure:** 1000 PSIG Maximum

**Electrical Enclosure:** NEMA 4X, 316 SS or FRP, Conduit to Electrical Components

**Base & Frame:** 1.5", 304 SS Square Tubing. Base with Wheels

**Approximate Weight:** Gross: 150 Lbs

**Dimensions:** 36" (L) x 28" (W) x 48" (H)

**Additional Specifications Available:**

- Mechanical P&I Drawing • Electrical Drawing • Mechanical Materials List •
- Electrical Materials List • General Drive Parameter Settings •

**Equipment Options:**

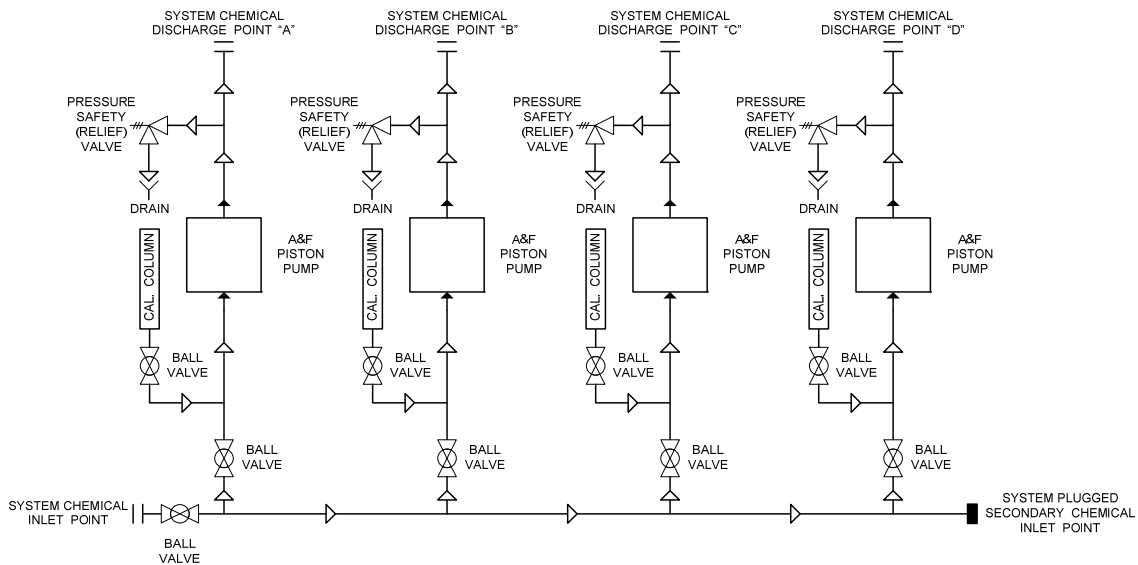
- Water Dilution Loop w/ Data Storage Unit • Automation Packages •
- Electrical Voltage Configurations •

**Shipping Point:** Mobile, Alabama



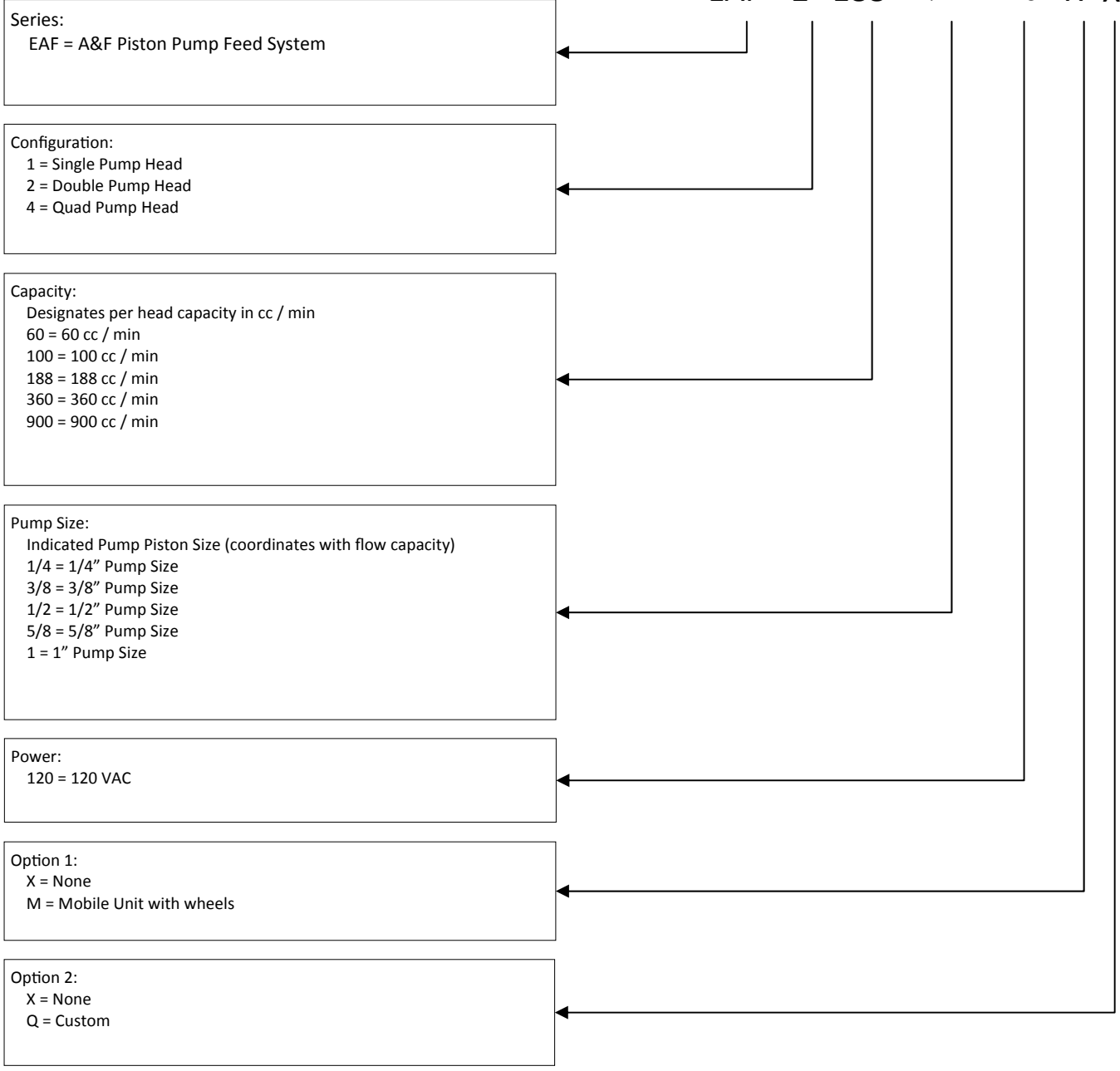
**QUAD A&F PORTABLE FEED UNIT FOR CHEMICAL EVALUATIONS AND BETA SITE TESTING**

## THEORY OF OPERATION



## EGM A&F PUMP FEED UNIT MODEL CODE EXAMPLE

EAF- 2 188- 1/2- 120- X X





**EGM<sup>LLC</sup>**

3748 Industrial Park Drive  
Mobile, AL 36693 USA  
+1.251.662.1250 phone  
+1.251.662.8250 fax  
[www.egm-llc.com](http://www.egm-llc.com)